

# ISTANBUL PPP WEEK

16 - 19 JAN 2023

PPP: INVEST IN  
PEOPLE | CLIMATE | ECONOMY



## Public-Private Partnership Center of the Kyrgyz Republic

Sanzhar Bolotov  
Director

19 January 2023



# Latest updates on PPP Center activities

	2021	2022
Number of projects:	32	56
Amount of PPP project portfolio:	400 million USD	over 1 billion USD
New initiated projects:	3	24
Signed agreements:	3	15
Amount of private investments:	14 million USD	50 million USD

# Latest updates on PPP Development

	2021	2022	2023
New PPP law	✓		
National Development program	✓		
By-law Acts	✓	✓	
New PPP Development program including		✓	
Opening P3C representatives offices			
Reforms of FFPP:			

# ISTANBUL PPP WEEK

16 - 19 JAN 2023  
PPP: INVEST IN  
PEOPLE | CLIMATE | ECONOMY

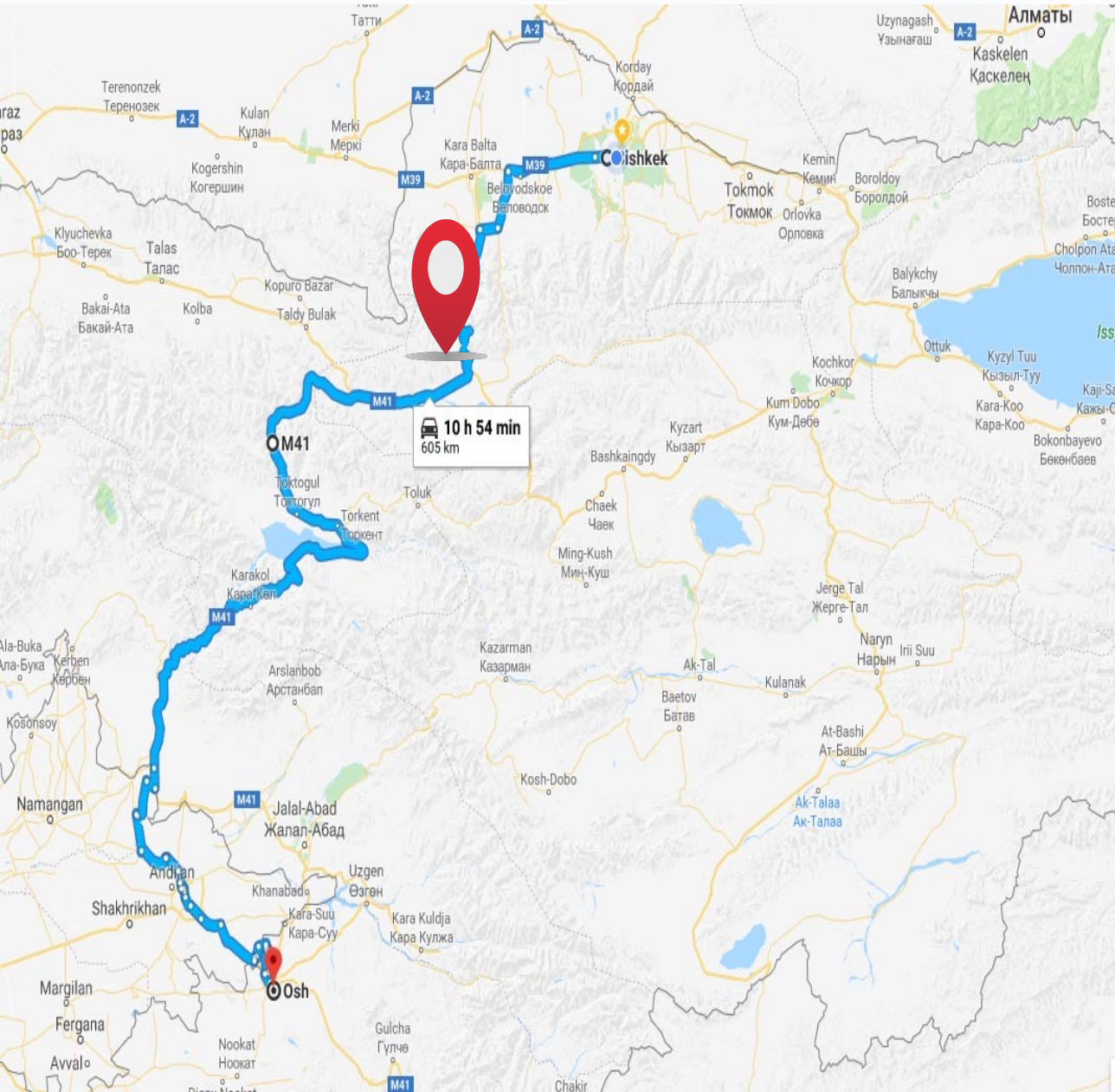


## TUNNEL CONSTRUCTION AT TOO-ASHUU PASS

### PROJECT OVERVIEW



# PROJECT OVERVIEW



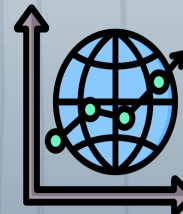
Too-Ashuu Pass located 135 km from the city of Bishkek, on the highway connecting the Northern (Bishkek city) and Southern (Osh city) capitals of the country.



International transport corridor provides an international highway link between Kazakhstan, Kyrgyzstan and Tajikistan.

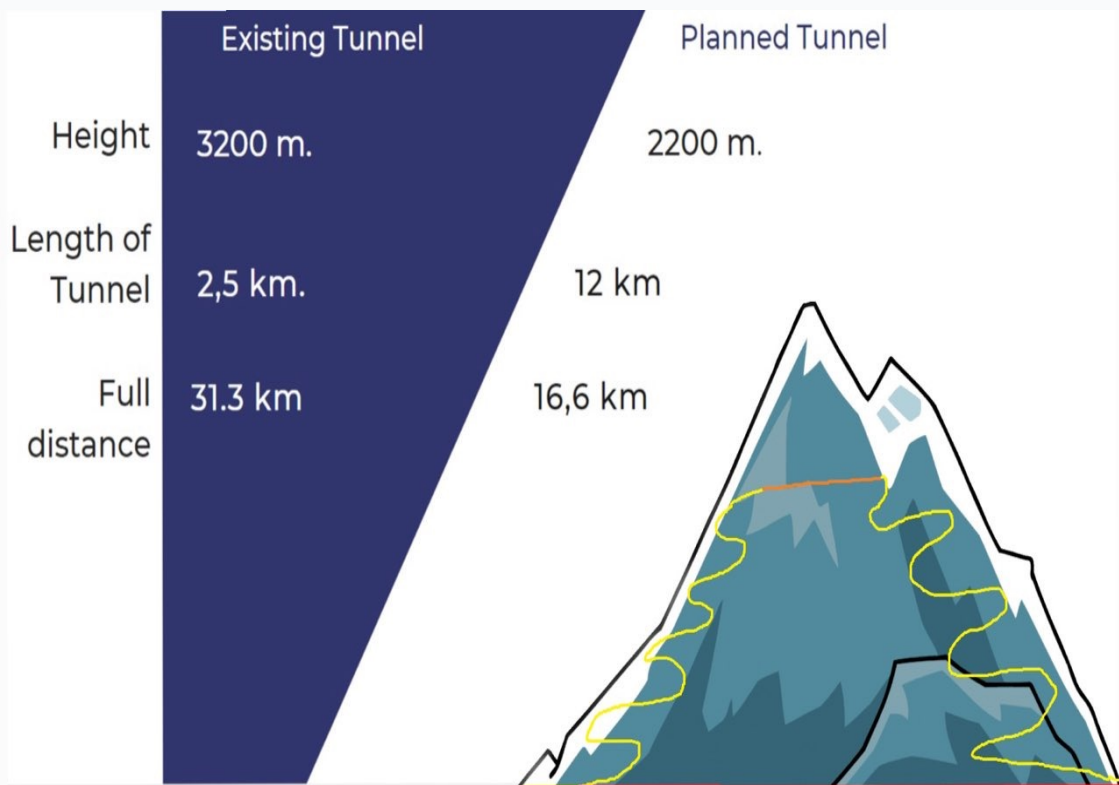


Height 3500 m.



Two cities produce almost 50 % of the national GDP of the Kyrgyz Republic

# PROJECT OVERVIEW



Existing tunnel

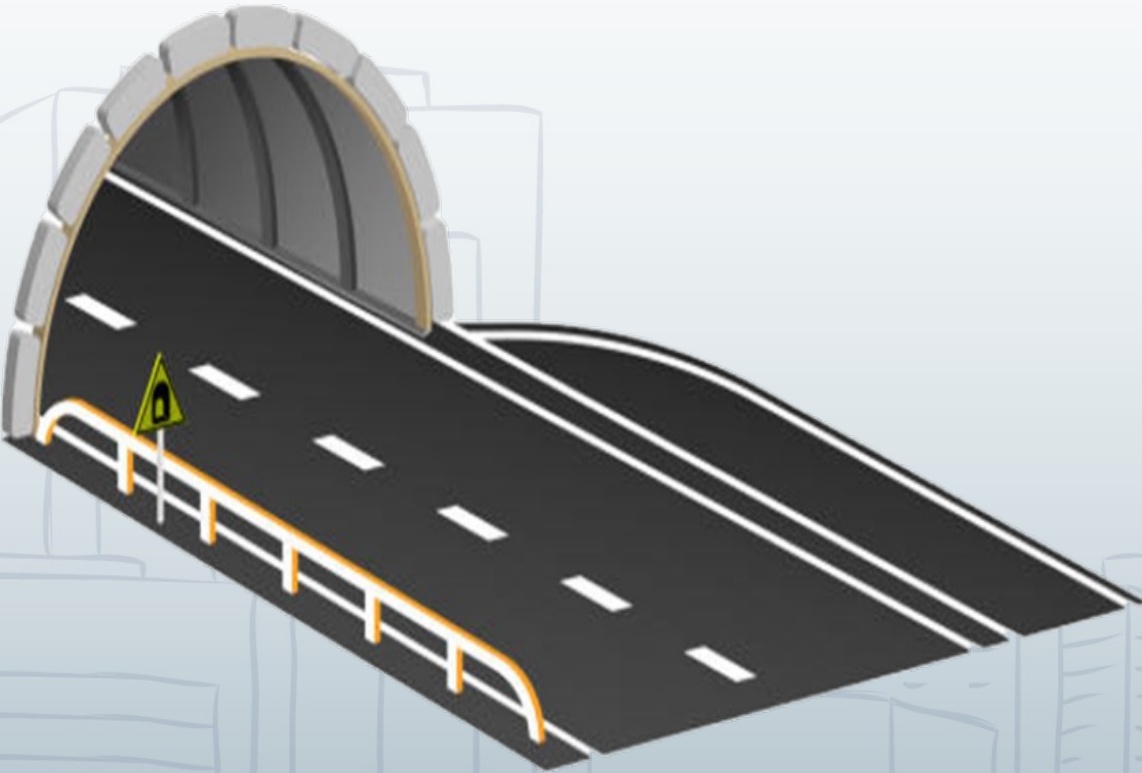
Planned tunnel

Highway

## Main advantages

- 1** The new tunnel is planned to be safer and more comfortable alternative to the existing one
- 2** The new tunnel reduces the distance of the existing highway down to 16,6 kilometers
- 3** High capacity dual carriageway

# PROJECT OVERVIEW



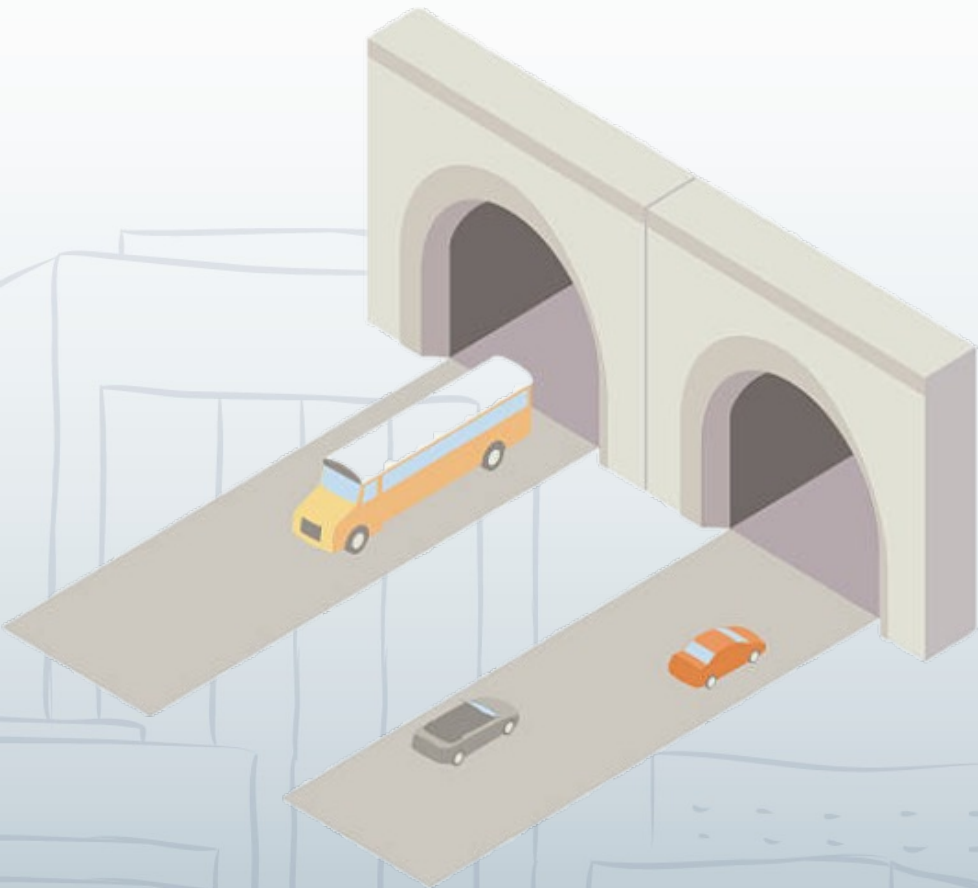
## PROJECTED TRAFFIC

There is a toll for the vehicles in the existing tunnel at Too – Ashuu Pass. Toll roads (or bridges and tunnels) were introduced as a way of creating short and quick alternative for congested areas, steep mountains, bays or steeply terrain roads so drivers may choose to pay for a quicker way to get to their destination.

Traffic forecasts for the evaluation period were derived from traffic counts given below.

Car, Pick-up, Light Truck, Minibus	<b>3.731</b>
Bus	<b>58</b>
Truck	<b>2,376</b>
Articulated Truck (TIR)	<b>150</b>
<b>Total</b>	<b>6.315</b>

# PROJECT OVERVIEW



## PROJECTED TRAFFIC

### Existing toll rates for the existing tunnel

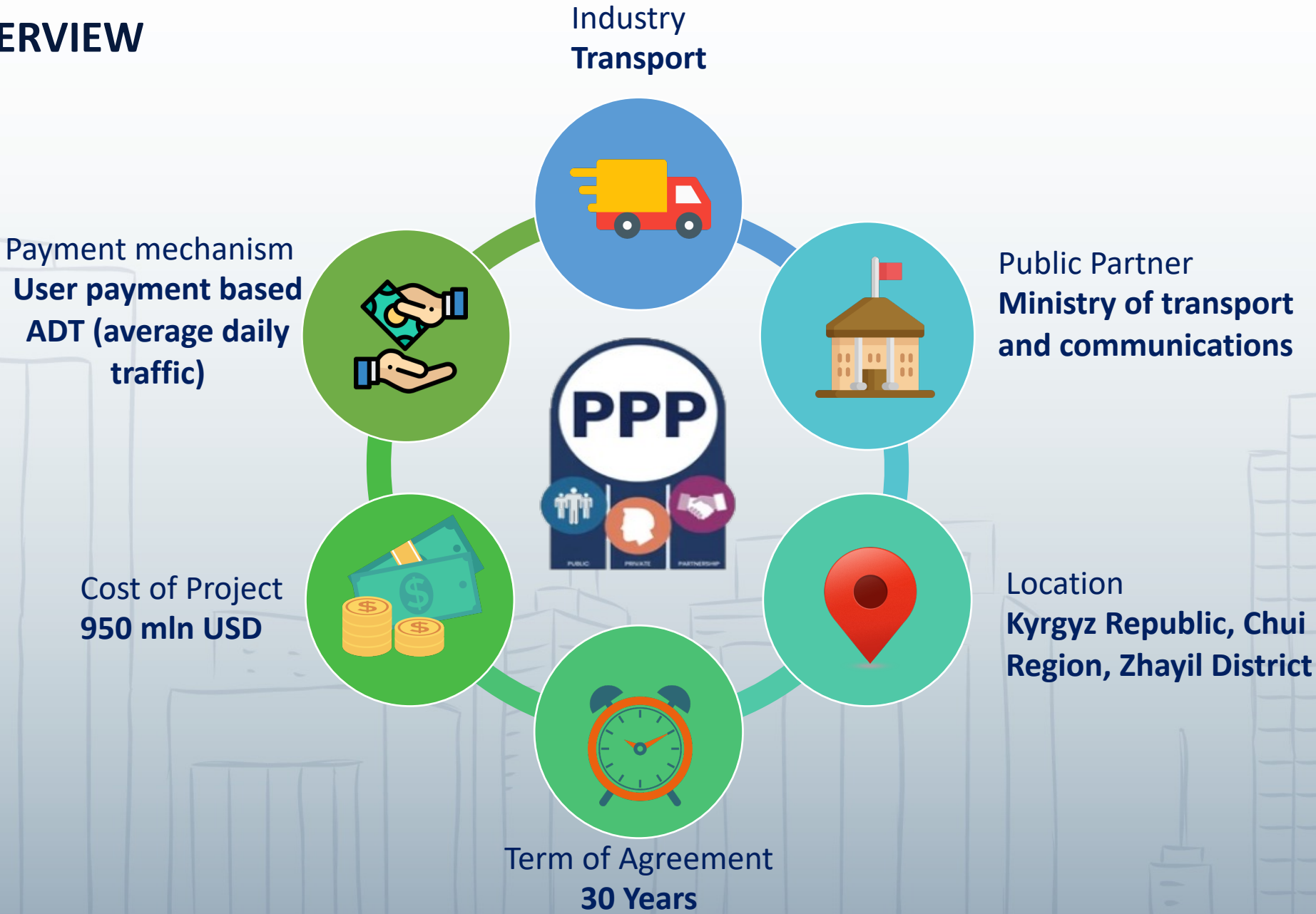
Passenger cars with Kyrgyz license plates – (with foreign ones)	\$ 0,65 (\$5)
Minibus or truck with a carrying capacity up to 3 tons with Kyrgyz license plates - (with foreign ones)	\$ 1,10 (\$10)
Buses up to 22 seats and trucks with a carrying capacity up to 3 tons with Kyrgyz license plates - (with foreign ones)	\$ 1,80 (\$20)
Buses from 22 to 32 seats and trucks with a carrying capacity of up to 10 tons with Kyrgyz license plates - (with foreign ones)	\$ 3,60 (\$40)
Buses over 32 seats and cargo vehicles with a carrying capacity of up to 25 tons with Kyrgyz license plates - (with foreign ones)	\$ 4,00 (\$60)
Cargo vehicles with a carrying capacity of more than 25 tons with Kyrgyz license plates - (with foreign ones)	\$ 4,60 (\$80)



It was assumed that if the new and the higher toll rates applied for the new tunnel project, all vehicles between Bishkek and Osh would be choosing the new tunnel which reduces the distance by 15 kilometers and also provides much more safe driving with a higher service level.



# PROJECT OVERVIEW





According to the economic analysis results, the New Tunnel Construction Project at Too Ashuu Pass is a project where **economic benefits are greater than the economic costs**

As a result of the economic analysis of PPP Project «Tunnel Construction Project at Too- Ashuu Pass» is considered as an **Economically Feasible Project**

# SUSTAINABILITY/CLIMATE RESILIENCE AND GENDER ANGLES



Job creation, fare collection system and other factors will make a significant contribution to the economic development of the country



Positive impact on the climate resilience of this region, as the distance traveled by vehicles will be shortened, which will subsequently lead to a reduction in vehicle emissions due to lower fuel consumption



The social benefit from the implementation of this project is also important, since a person's life is measured by time, reducing the time spent on the road will positively affect the life of every person who travels through this tunnel



Reduction of some of the risks for all drivers, including more than 300,000 female drivers in the Kyrgyz Republic



**ISTANBUL  
PPP WEEK**

## Public-Private Partnership Center of the Kyrgyz Republic



**PPP**

**PUBLIC  
PRIVATE  
PARTNERSHIP**

***THANK YOU FOR LISTENING***



pppcoe



PPPCoE



PPPCOE



istanbulpppweek.com